



EARNINGS-TO-ENVIRONMENT RATIO™

ENVIRONMENTAL PROFITABILITY™ IN ACTION

INTRODUCING **E/E RATIO™**

Measure and showcase *quantitative* metrics for your company's environmental profitability using **E/E RATIO™** - just like a P/E ratio, but for the environment!

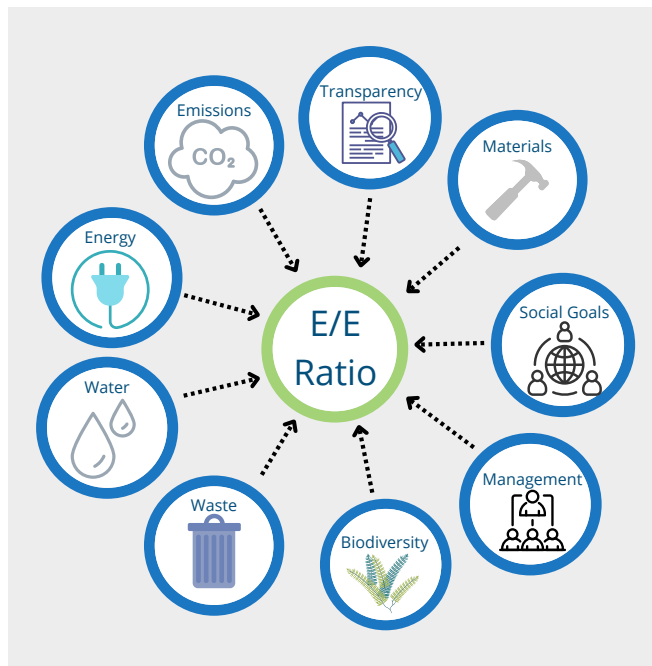
ALIGNING PROFITABILITY WITH SUSTAINABILITY

By using **E/E RATIO™**, key stakeholders of companies can now showcase their environmental profitability in action by demonstrating their commitments toward a greater ESG impact - influencing peers, shareholders and investors to do the same - reshaping the industry landscape for a safer, greener and more sustainable future.



Shareholders care.
Consumers care.
Nature cares.
You should too.

$$\text{E/E Ratio} = \frac{\text{earnings per share}}{\text{environmental harm}}$$



Good sustainability and ESG practices matter to consumers and they correlate to lower operating costs, higher profitability and superior share price performance.

E/E RATIO™ takes into account over 25 variables, including water use, emissions and recycling to provide a clear, quantitative metric for assessing a company's sustainability footprint. Companies can use the diagnostic tool's results to identify their ESG standing within their company or industry and evaluate alignment with prior sustainability or SDG commitments.